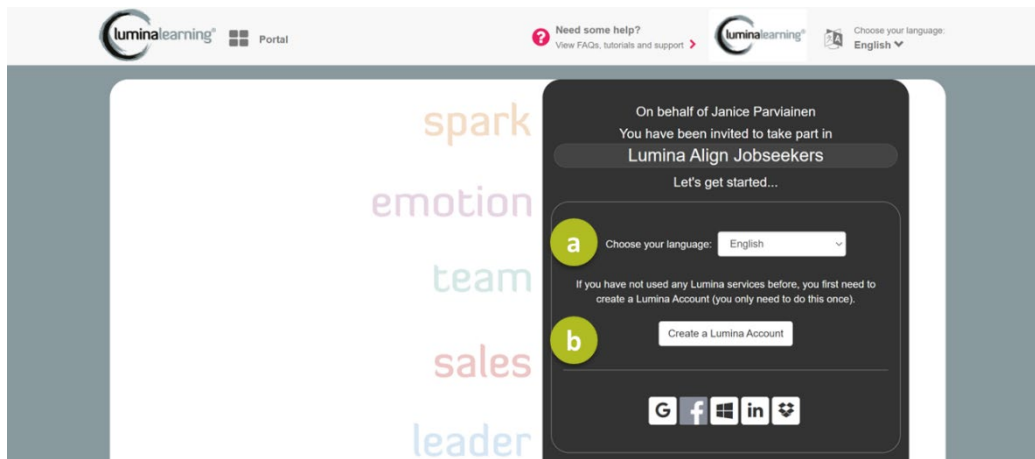


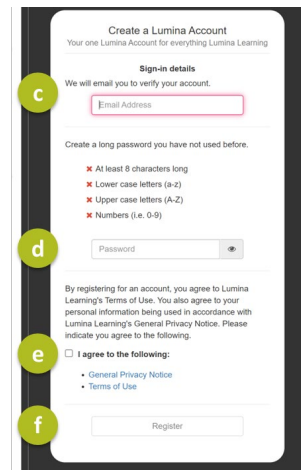
# Completing the Lumina Assessment

## STEP 1 – CREATE YOUR ACCOUNT

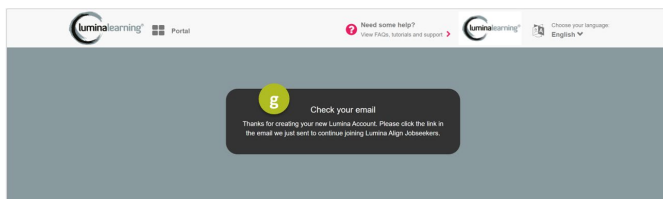
- Select your language
- Click on Create a Lumina Account



- Enter your email address
- Create a password
- Agree to policies and terms of use
- Click on Register



- Check your email for a verification email from [support@luminalearning.com](mailto:support@luminalearning.com)
- Click on confirm my account.



## STEP 2 – SIGN INTO YOUR NEW ACCOUNT

- a. Enter your email
- b. Click on Next
- c. Enter your password
- d. Click on Sign in

On behalf of Janice Parvainen  
You have been invited to take part in  
**Lumina Align Jobseekers**  
Let's get started...

If you already have a Lumina Account, simply sign in below.

Sign in with your Lumina Account  
Your one Lumina Account for everything Lumina Learning

Username or Email Address

Next

Alternatively, if you have previously linked your Social account to Lumina Learning, sign in with one click.

Sign in with Google Sign in with Facebook  
Sign in with Microsoft Sign in with LinkedIn  
Sign in with Dropbox

Forgot password?

- e. Enter your first and last name
- f. Select your preferred gender
- g. Select your communication preferences
- h. Click on Continue

Contact Name  
How you wish your name to be displayed on your Lumina Profiles.

Jane Sample

Gender  
(Includes both cisgender and transgender identities)

Male  Female  Other / Prefer not to say

Participant Communication Preferences

Please select which email updates you would like to receive from us.

Lumina Participant	From Lumina Learning
Opportunities to take part in research	<input type="checkbox"/>
Opportunities to receive learning resources	<input type="checkbox"/>
Information about our products and services	<input type="checkbox"/>

Continue

- i. Select your organization or not applicable
- j. Click on OK

Please select your organisation name.

Please select...

Continue

Alternatively, if you have previously linked your Social account to Lumina Learning, sign in with one click.

k. Click on Continue

This task requires you to share the following information with the person who asked you to complete the task.

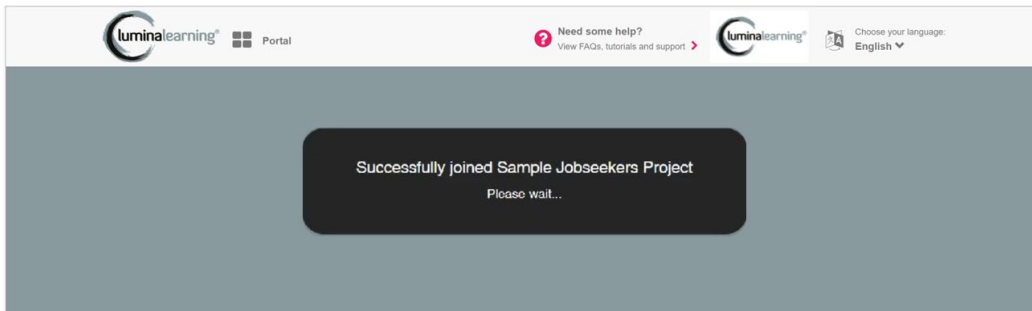
First Name	Sample
Last Name	Kari
Contact Email	kari.lumina@outlook.com
Pronoun Gender	Feminine

You may be asked to provide further information during the task.

Please contact the person who asked you to complete the task if you require details of how they will use your information: sample@jsgperfor.net

**k**

You have now successfully joined.



## STEP 3 – COMPLETE THE ASSESSMENT

- a) Select your language
- b) Click on Continue

luminalearning® Portal

Need some help? View FAQs, tutorials and support >

luminalearning® Choose your language: English

### Language selection

Please select the language that you would like the questionnaire to be displayed in

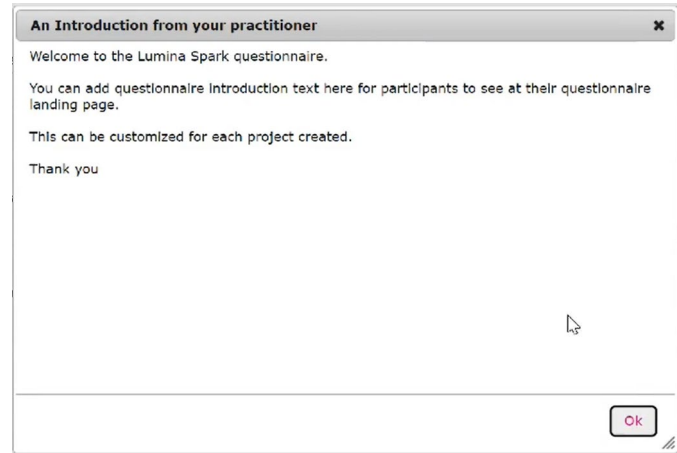
**a** Language

**b**

Once you have started the questionnaire, you will not be able to change the language without starting the questionnaire again from the beginning.

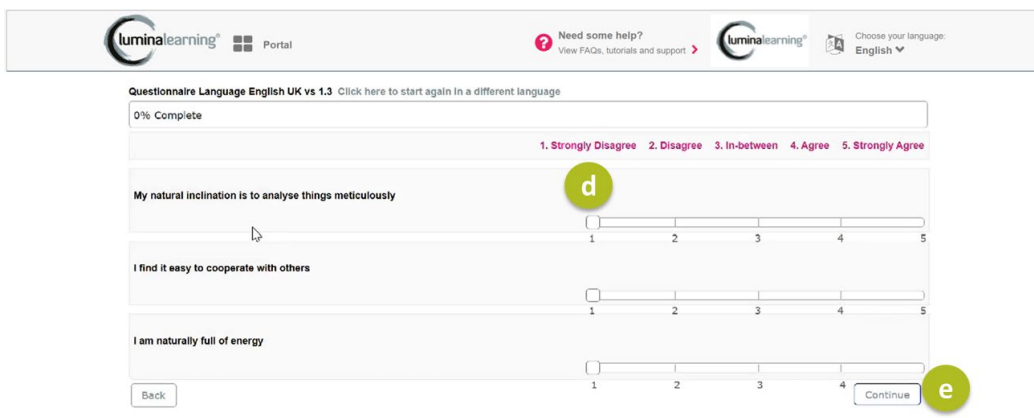
c) Read any instructions:

- Find a quiet place to complete the questionnaire
- Answer honestly and on first instinct
- Use the full 1-5 rating.
- Answer 144 questions with a scale like the one to the left.
- Click back or next to move through questions.



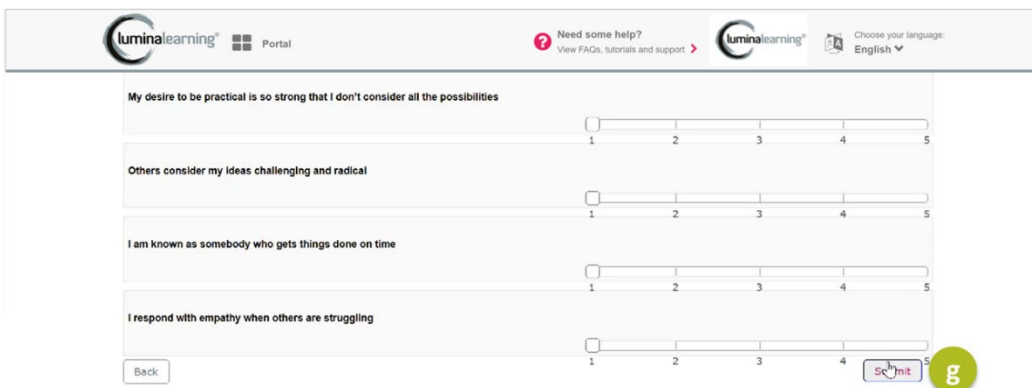
d) Use the slider to rate each question from 1 (strongly disagree) to 5 (strongly agree).

e) Click on Continue



f) Continue until you reach the last question.

g) Click on Submit.



- h) Answer any demographic questions about yourself (e.g., age, language, country, employment status and experience) you are comfortable answering.
- i) Answer Prefer not to say where applicable.
- j) Click on Continue.

Thanks for submitting your answers  
Please finish completing your profile then press continue

Complete your profile  
Personalise your Lumina Experience

Birth Year  
Please select...

First Language  
Please select...

Country of Residence  
Please select...

Country of Nationality  
Please select...

In order to create your profile, Lumina analyses your questionnaire scores alongside a representative sample of people with a similar background. The questions below enable us to undertake this analysis.

Employment Status  
Prefer not to say

Continue

- k) Click on the arrow beside your name to log out.
- l) You will receive an email with your portrait.

luminalearning® Portal

Need some help? View FAQs, tutorials and support >

Choose your language: English

Julie Sample

Tasks to Complete

Portrait Downloads

Lumina Services

Personal Details

Account Security

Sample

Tasks to Complete (0) Research tasks (0) Completed tasks (2) Archived Tasks (0)

0 Tasks to Complete