




---

---

---

---

---

---

---

---

## The Toolkit How To's

**Who is this Toolkit For?**

- Job coaches or facilitators incorporating ALiGN into a job readiness program.

**How to Use this Module?**

- This module is Optional.
- The Lumina Splash App can be a valuable tool to examine the profile further, look at the 3 profiles: underlying you, every day you, and overextended you.
- This module could be done in class or could be sent to participants to learn about the app independently.
- Incorporate the lessons into your program, add slides or removing content as necessary.
- Use only the lessons that apply.
- Use the Facilitator Guide for suggested scripting and activity processes.

**How to Navigate the Toolkit?**

- View all lessons in Slide Show format.
- Use the Menu to select Modules or lessons (see first image below).
- Advance slides using **Right Arrow, Page Down, Enter, Spacebar** or **mouse clicks** to review all content.
- Click on the home icon in the top right-hand corner or bottom middle to return to the menu (see second image below).

 Two screenshots of the ALiGN app interface are shown. The first shows a menu with options like 'View All Lessons', 'View My Progress', and 'View My Results'. The second shows 'The ALiGN Assessment' screen with a 'Start Assessment' button and logos for OTEC and luminalearning.

---

---

---

---

---

---

---

---

**The Lumina Splash App**

[Download the App](#)  
[Scan the Code](#)  
[Understand the Results](#)  
[Lumina Splash JobAid](#)

Click on the Module or Lesson to begin

---

---

---

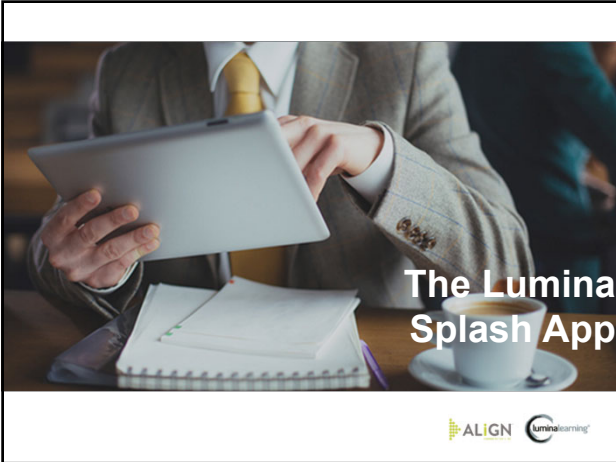
---

---

---

---

---




---

---

---

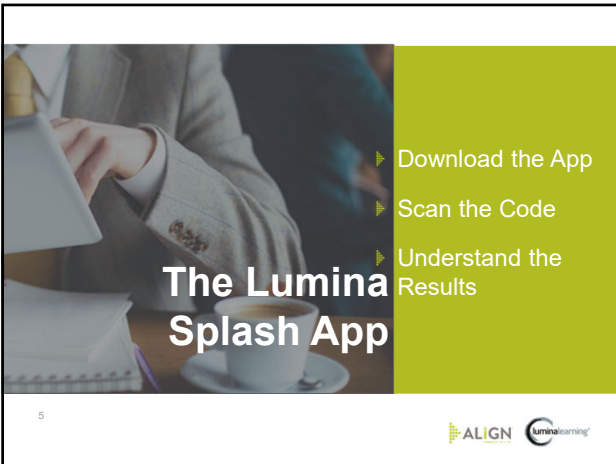
---

---

---

---

---




---

---

---

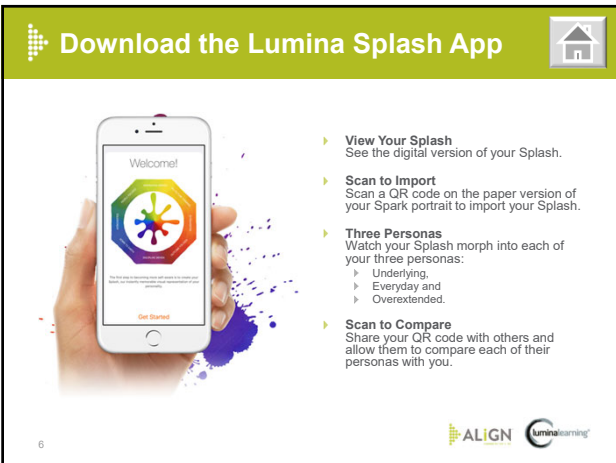
---

---

---

---

---




---

---

---

---

---

---


---

---

**Download the Lumina Splash App**




Lumina Splash App



www.luminalearning.ca

7





---

---

---

---


---

---

---



---

**Scanning the Splash**



The Splash QR-Code is found on the last page of your personality profile.

8


---

---

---

---


---

---



---

---

**Scanning the Splash**



9


---

---

---

---

---

---

---

---

**Understand the Results in the App**

10

ALIGN luminalearning

---

---

---

---

---

---

---

---

**The 3 Personas**

The **underlying** you

- You at your core

The **everyday** you

- How you present yourself everyday at work or with your family

The **overextended** you

- Traits you exhibit when you are in high pressure circumstances or under stress

ALIGN luminalearning

---

---

---

---

---

---

---

---

**Over Extended Persona**

12

ALIGN luminalearning

---

---

---

---


---

---

---



---

**Activity – 3 Personas**



- ▶ Compare your 3 personas.
- ▶ Identify which aspects remained the same in the 3 personas and which changed.

13


---

---

---

---


---

---

---



---

**Lumina Splash App Job Aid**



Click on image to access the Lumina Splash Instruction.

14


---

---

---

---

---

---

---

---